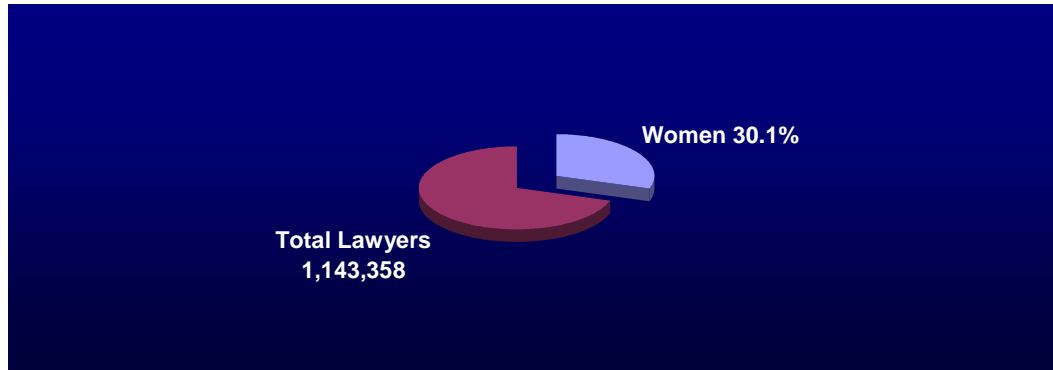
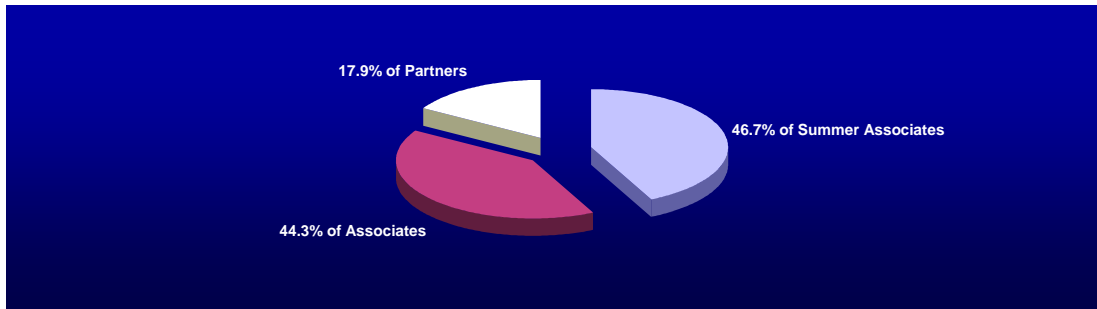


Women in the Legal Profession



2007 National Lawyer Population by State. American Bar Association Marketing Research Department.

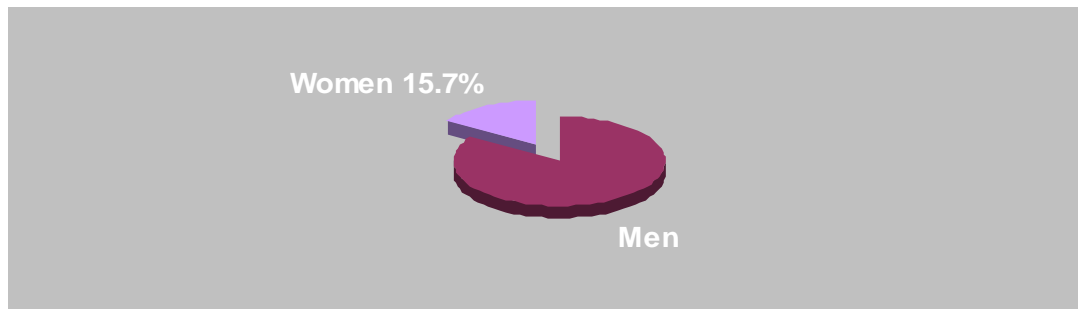
Women in Private Practice



Women and Minorities at Law Firms - 2006. National Association for Law Placement, November 2005.
www.nalp.org/content/index.php?pid=448

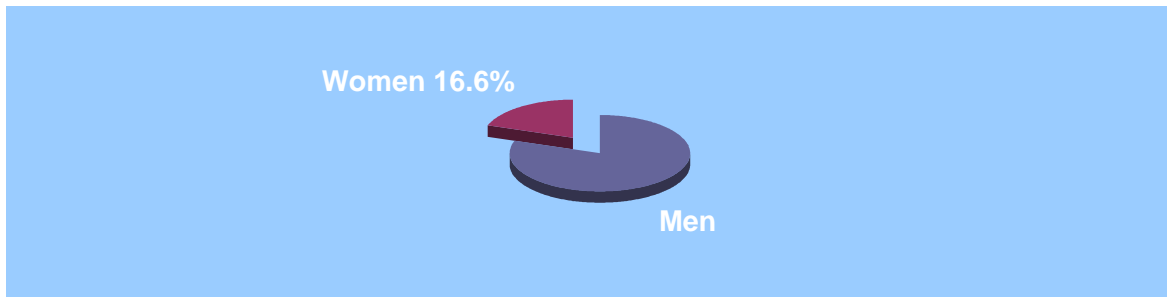
Women in Corporations

Fortune 1000 General Counsel



MCCA 2006 Fortune 1000 General Counsel Survey, as of May 2006.
www.mcca.com/index.cfm?fuseaction=page.viewpage&pageid=1207

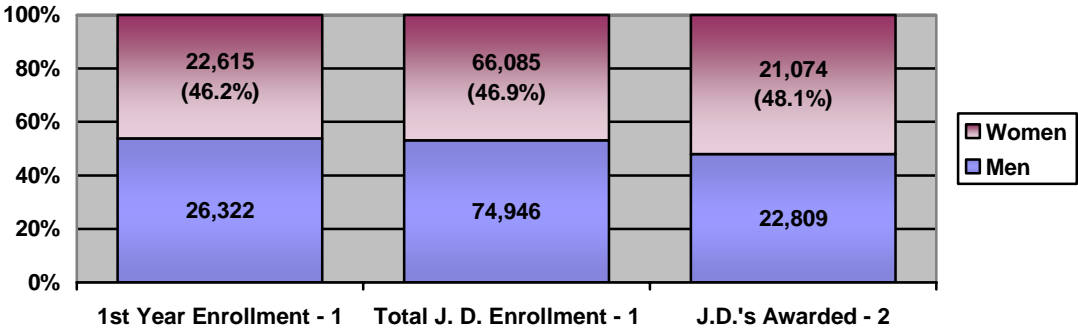
Fortune 500 General Counsel



Caucasian	African American	Hispanic	Asian American/ Pacific Islander
15%	1%	.2%	0%

MCCA 2006 Fortune 500 General Counsel Survey, as of May 2006. * MCCA was unable to confirm the race of 2 women. www.mcca.com/index.cfm?fuseaction=page.viewpage&pageid=1207

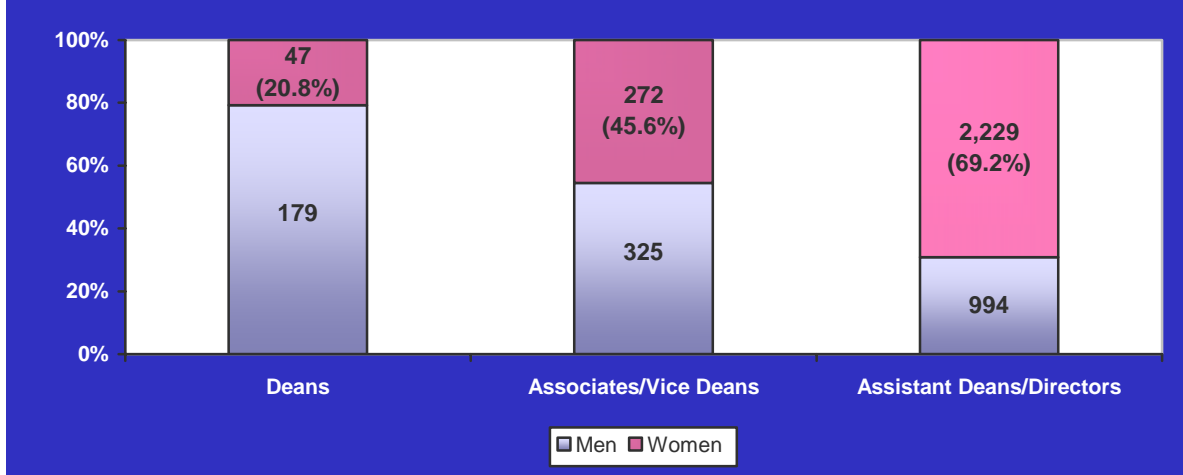
Women in Law Schools



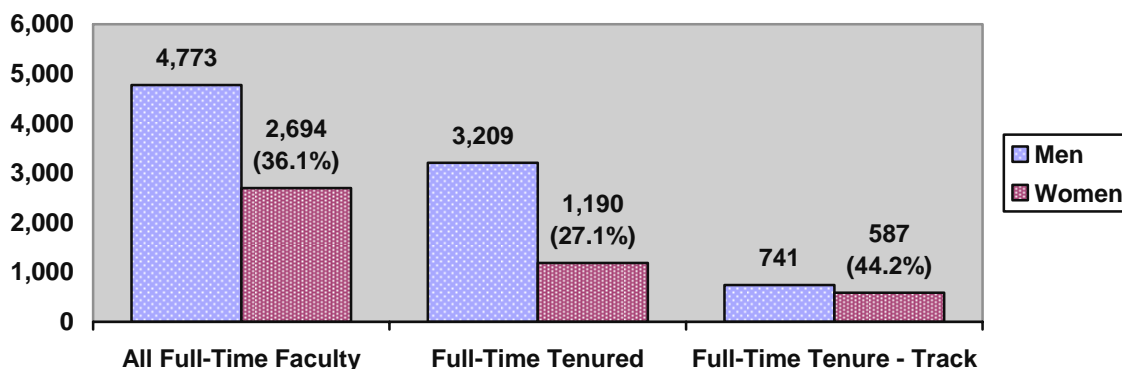
¹ Enrollment and Degrees Awarded, 2006-2007. American Bar Association Section of Legal Education and Admissions to the Bar. www.abanet.org/legaled/statistics/charts/stats%20-%201.pdf

² J.D. and LL.B. Degrees Awarded, 2005-2006. American Bar Association Section of Legal Education and Admissions to the Bar. www.abanet.org/legaled/statistics/charts/stats%20-%207.pdf

Law School Administration



Law School Staff by Gender and Ethnicity 2006-2007. American Bar Association Section of Legal Education and Admissions to the Bar.
www.abanet.org/legaled/statistics/charts/facultyinformationbygender.pdf



Law School Staff by Gender and Ethnicity 2006-2007 ABA Section of Legal Education and Admissions to the Bar. www.abanet.org/legaled/statistics/charts/facultyinformationbygender.pdf

Women in the Judiciary

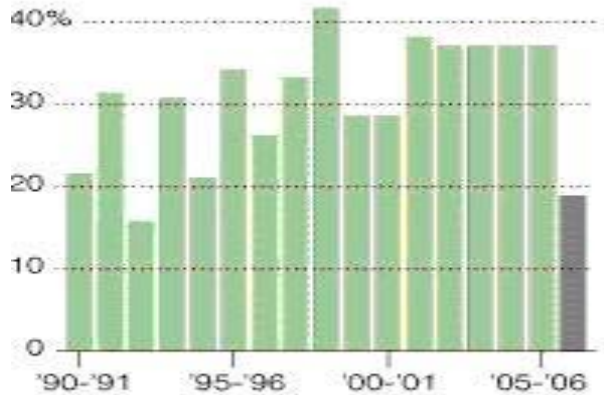
<u>Type of Court</u>	<u>Total # of Seats</u>	<u>Women</u>	<u>% Women</u>
District Court Judges ¹	675 current seats – 33 vacancies	162	24.0%
Total Circuit Courts ¹	167 current seats – 13 vacancies	42	25.1%
International Trade ¹	9 current seats	3	33.3%
United States Supreme Court	9	1	11.1%
State Courts of Last Resort ²	349	106	30.4%
Female Chief Justice ²	53	19	35.8%

¹ Alliance for Justice Judicial Selection Database: Demographic Overview of the Federal Judiciary, as of 9/7/2007. www.judicialselectionproject.org/demographics.asp

² *Judicial Selection and Retention Membership on State Courts of Last Resort, by Sex*. July, 2007. National Center for State Courts. www.ncsconline.org/WC/Publications/KIS_JudSelCOLRsex.pdf. Note: The state courts of last resort include the Oklahoma Court of Criminal Appeals and the Texas Court of Criminal Appeals.

U.S. Supreme Court Law Clerks

Percentages of Female Clerks Since 1990



Source: Supreme Court

Source: Supreme Court, as reported in *Women Suddenly Scarce Among Justices' Clerks*. Linda Greenhouse. August 30, 2006. *New York Times*

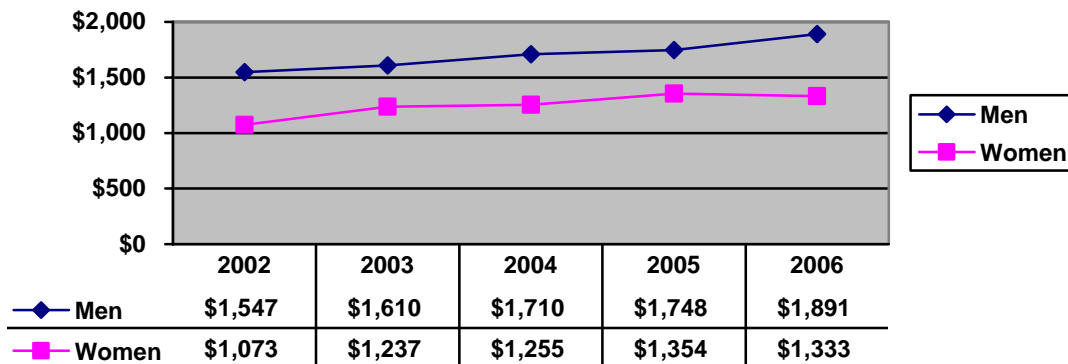
The Justices and Percentages of Female Clerks Since 2000

Breyer	Ginsburg	O'Connor	Stevens	Thomas	Souter
54%	46%	46%	44%	39%	36%

Rehnquist	Roberts	Alito	Kennedy	Scalia	
28%	22%	13%	11%	7%	

Women Suddenly Scarce Among Justices' Clerks. Linda Greenhouse. August 30, 2006. *New York Times*

Weekly Salary Men vs. Women Lawyers



Women lawyers' weekly salary as a percentage of male lawyers' salary:

69.4% | 76.8% | 73.4% | 77.5% | 70.5%

Bureau of Labor Statistics, "Median weekly earnings of full-time wage and salary workers by selected characteristics," for 2006 and previous years. www.bls.gov/cps/cpsaat39.pdf

Women in the ABA

	<u>Total</u>	<u>Women</u>	<u>% Women</u>
Membership¹	383,737	124,986	32.6%
Board of Governors²	38	14	36.8%
Section/Division Chairs, 2007-2008	28	8	28.6%
Total Presidential Appointments, 2007-2008	705	275	39.0%
Committee Chair Appointments, 2007-2008	81	25	30.8%

¹ American Bar Association Marketing and Membership (as of September 30, 2007)

² American Bar Association www.abanet.org/leadership/board/home.html

Women presidents of the ABA:

- Roberta Cooper Ramo (1995 - 1996)
- Martha W. Barnett (2000 - 2001)
- Karen J. Mathis (2006-2007)

Women chairs of the House of Delegates:

- Martha W. Barnett (1994 -1996)
- Karen J. Mathis (2000 - 2002)
- Laurel G. Bellows (2006-2007)

Treasurer-Elect

- Alice E. Richmond (2007-2008)

First woman member of the ABA:

- Mary Florence Lathrop; Denver, CO (1918)

For more details, see the ABA Commission on Women's Goal IX Report at www.abanet.org/women/goalix.html.